

The WaveOne single-file reciprocating system

Julian Webber,¹ Pierre Machtou,² Wilhelm Pertot,³ Sergio Kuttler⁴ and John West⁵

The new WaveOne NiTi file from Dentsply Maillefer is a single-use, single-file system to shape the root canal completely from start to finish. Shaping the root canal to a continuously tapering funnel shape not only fulfills the biological requirements for adequate irrigation to clean the root canal system of all bacteria, bacterial by-products and pulp tissue (Sjogren et al, 1997) but also provides the perfect shape for three-dimensional obturation with gutta percha (Schilder, 1974; West JD, 2008).

In most cases, the technique only requires one hand file followed by one single WaveOne file to shape the canal completely. The specially designed NiTi files work in a similar but reverse 'balanced force' action (Roane, Sabala, Duncanson, 1985) using a pre-programmed motor to move the files in a back and forth 'reciprocating action'. The files are manufactured with M-Wire technology improving strength and resistance to cyclic fatigue by up to nearly four times in comparison with other brands of rotary NiTi files (Johnson et al, 2008).

There are many dentists who, for whatever reason, are reluctant to use NiTi rotary instruments to prepare canals, despite the recognised advantages of flexibility, less debris extrusion and maintaining canal shape, amongst other advantages (Walia, Brantley, Gerstein, 1998; Reddy, Hicks,

¹ Julian Webber, private practice, London, UK.

² Pierre Machtou, private practice, Paris, France

³ Wilhelm Pertot DCD, DEA, PhD, private practice, Paris, France

⁴ Sergio Kuttler, Professor, Dept of Endodontics and Associate Dean for advanced education programs, Nova Southeastern University, College Of Dental Medicine in Fort Lauderdale, Florida, USA

⁵ John West, private practice, Tacoma, Washington, USA



Figure 1: WaveOne Small (yellow), Primary (red), Large (black).

1998; Pettiette, Delano, Trope, 2001). For them, the use of a single reciprocating file will be very attractive both in terms of time and cost saving.

At present there are three files in the WaveOne single file reciprocating system available in lengths 21mm, 25mm and 31mm. (Figure 1):

1. The WaveOne Small file is used in fine canals. The tip size is ISO 21 with a continuous taper of 6%

2. The WaveOne Primary file is used in the majority of canals. The tip size is ISO 25 with an apical taper of 8% that reduces towards the coronal end

3. The WaveOne Large file is used in large canals. The tip size is ISO 40 with an apical taper of 8% that reduces towards the coronal end.

The instruments are designed to work with a reverse cutting action. All instruments have a modified convex



Figure 2: WaveOne apical cross section, modified convex triangular.

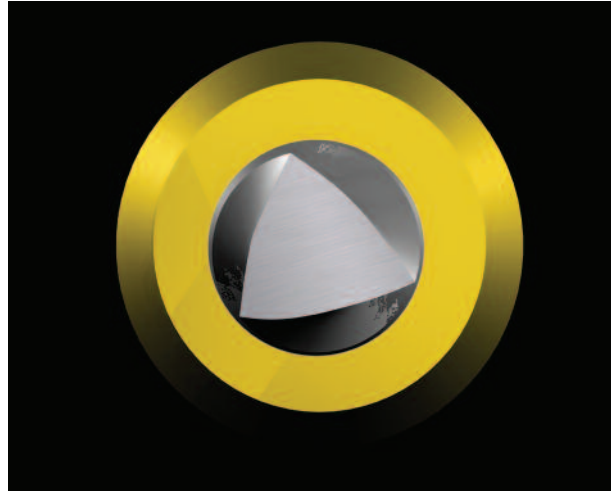


Figure 3: WaveOne coronal cross section, convex triangular.

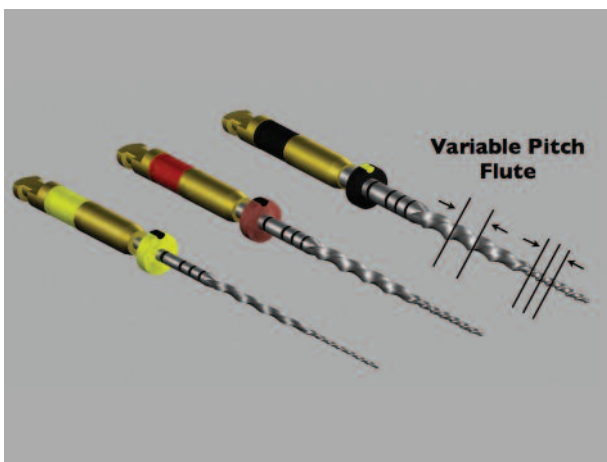


Figure 4: WaveOne variable pitch flute increases safety.



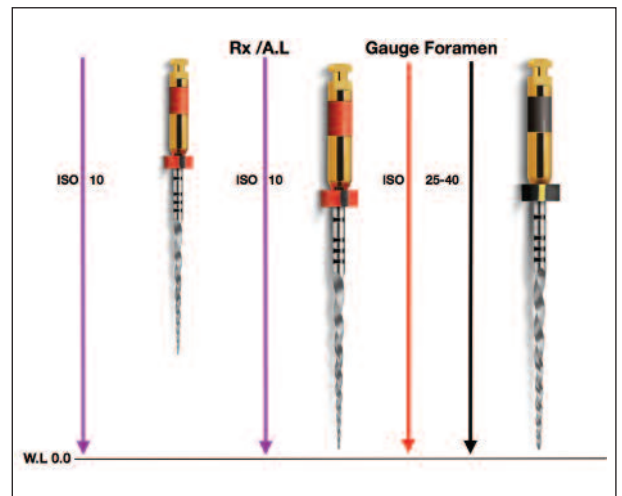
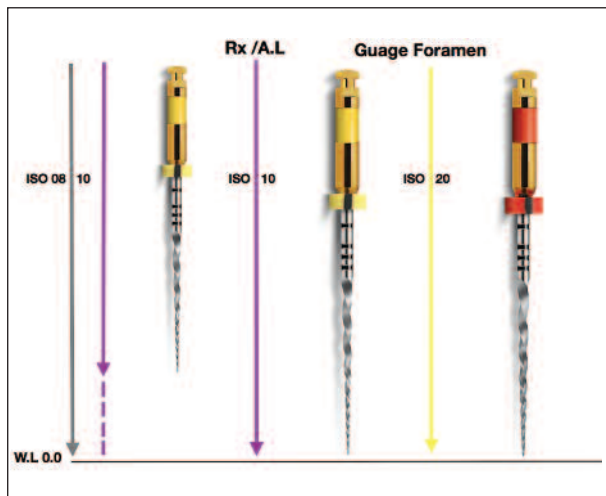
Figure 5: WaveOne motor and 6:1 reducing handpiece.

triangular cross section at the tip end (Figure 2) and a convex triangular cross section at the coronal end (Figure 3). This design improves instrument flexibility overall. The tips are modified to follow canal curvature accurately. The variable pitch flutes along the length of the instrument considerably improve safety (Figure 4).

Because there is a possibility of cross-contamination associated with the inability to completely clean and sterilize endodontic instruments (Letters et al, 2005) and the possible presence of prion in human dental pulp tissue (Schneider et al, 2007), all instruments used inside root canals should be single use (Department of Health, 2007). WaveOne instruments are a new concept in this important standard of care, as they are truly single use. The plastic color-coding in the handle deforms if sterilized, preventing the file from being placed back into the handpiece.

The recommendation for single use has the added advantage of reducing instrument fatigue, which is an even more important consideration with WaveOne files, as one file does the work traditionally performed by three or more rotary NiTi files.

The WaveOne motor (Figure 5) is rechargeable battery-operated with a 6:1 reducing handpiece. The pre-programmed motor is preset for the angles of reciprocation and speed for WaveOne instruments. The counter-clockwise (CCW) movement is greater than the clockwise (CW) movement. CCW movement advances the instrument, engaging and cutting the dentin. CW movement disengages the instrument from the dentin before it can (taper) lock into the canal. Three reciprocating cycles complete one complete reverse rotation and the instrument gradually advances into the canal with little apical pressure required.



Figures 6-8: WaveOne Small, Primary and Large files with their respective file selection and clinical procedural flow chart.

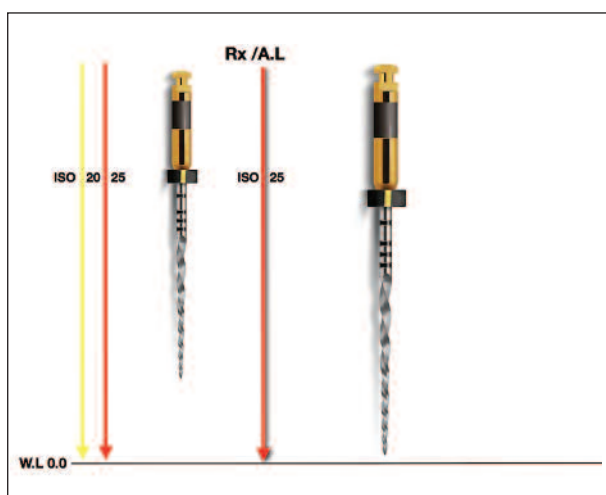


Figure 9: EndoActivator irrigation device.

All brands of NiTi files can be used with the WaveOne motor, as it has additional functions for continuous rotation. However, as WaveOne files have their own unique reverse design, they can only be used with the WaveOne motor with its reverse reciprocating function.

The WaveOne technique involves the following stages:

1. Straightline access, accepted protocol
2. WaveOne file selection
3. Single-file shaping
4. Copious irrigation with 5% NaOCl and EDTA before, during and after single-file shaping.

WaveOne file selection and clinical procedure (Figures 6, 7, 8)

Whilst a good preoperative periapical radiograph will give an indication of what to expect before the canal is prepared

(size and length of canal, number of canals, degree and severity of curvature) only the first hand file into the canal will aid in the selection of the WaveOne file as follows:

1. If a 10 K-file is very resistant to movement, use WaveOne Small file
2. If a 10 K-file easily moves to length easily, is loose or very loose, use WaveOne Primary file
3. If a 20 hand file or larger goes to length, use WaveOne Large file.

Single file shaping

1. Take hand file into canal and watch-wind to length or resistance (approximately two-thirds of canal length)
2. Use appropriate WaveOne file to approximately two-thirds of canal length
3. Irrigate copiously



Figure 10: WaveOne matching paper points.



Figure 11: WaveOne matching gutta percha points.

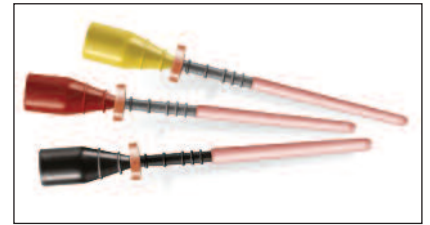


Figure 12: WaveOne matching Thermafil obturators.



Figures 13a-c: Preoperative radiograph of 36 showing narrow and curved canals (a). Post-operative radiographs: Canals were shaped with a WaveOne Primary file and filled with gutta percha with WVC (b&c).



Figures 14a-c: Preoperative radiograph of 16 showing severely curved MB and DB canals (a). Post-operative radiographs: Canals were shaped with a WaveOne Primary file and filled with gutta percha with WVC (b&c).

4. Take hand file to length and confirm with an apex locator and radiograph
5. Take WaveOne to length
6. Confirm foramen diameter with hand file the same size as WaveOne file. If snug, preparation is complete
7. If foramen diameter larger than WaveOne file, consider the next larger WaveOne file
8. The majority of cases will be completed with WaveOne Primary file.

Guidelines for use

1. Use WaveOne files with a progressive up and down movement no more than three to four times, only little force is required
2. Remove file regularly, wipe clean, irrigate and continue

3. If file does not progress, confirm patent canal and consider using a smaller WaveOne file
4. Whilst glide path management is minimal with WaveOne shaping files, some practitioners will be more comfortable if the glide path is first secured with PathFiles (Dentspy Maillefer)
5. In severely curved canals, complete apical preparation by hand if reproducible glide path is not possible
6. WaveOne files can be used to relocate the canal orifice and expand coronal shape; even in a reciprocating motion use them with a 'brushing' action short of length to achieve this
7. Never work in a dry canal and constantly irrigate with NaOCl and later EDTA
8. As preparation time is short activate the irrigating



Figures 15a-c: Preoperative radiograph of 17 with canals hardly visible (a). Post-operative radiographs: Canals were shaped with a WaveOne Primary file and filled with gutta percha with WVC (b&c).



Figures 16a-c: Preoperative radiograph of 17 with canals barely visible and 15 with a quite large canal (a). Post-operative radiographs: Tooth 17 canals were shaped with a WaveOne Primary file. 15 was shaped with a WaveOne Large file. All canals were filled with gutta percha with WVC (b&c).

solutions to enhance their effect; the EndoActivator (Dentsply Maillefer) is ideal for this (Figure 9) (Ruddle, 2008).

WaveOne obturating solutions

Obturation of the root canal system is the final step of the endodontic procedure. The WaveOne system includes matching paper points, gutta percha points and ThermoFil style WaveOne obturators (Figures 10-12).

The matching gutta percha points can be used in conjunction with the Dentsply Maillefer Calamus Dual 3D Obturation System as demonstrated in the following cases.

Case I (Figures 13a-c)

Tooth 36 presented with symptoms of irreversible pulpitis and early apical periodontitis. Initial radiographic assessment showed four narrow and curved canals. Access was made and all canals were worked to length with a 10 K-file. WaveOne Primary file (25 .08) was selected and length was reconfirmed with a 10 K-file. The WaveOne Primary file was worked to length in all four canals. Obturation was done with warm vertical condensation (WVC) using Calamus Dual.

Case II (Figures 14a-c)

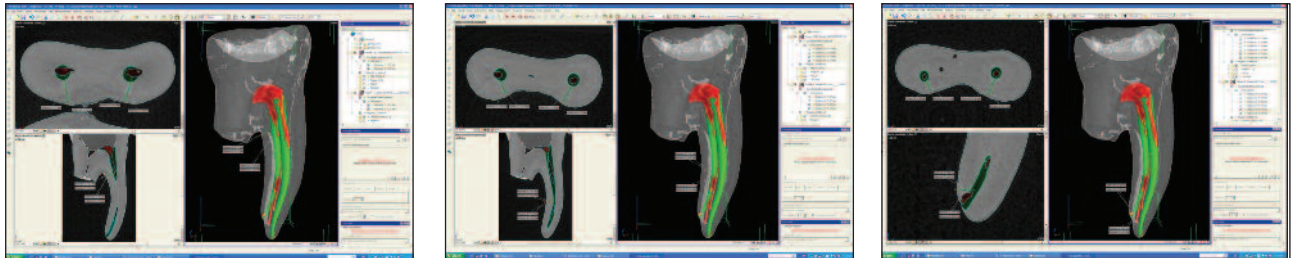
Tooth 16 had symptoms of acute pulpitis with a temporary filling, covering exposure distally, as well as severe curvature of the mesiobuccal (MB) canals and apically in the distal canal. K-files 8 and 10 were taken to length in all the canals. A WaveOne Primary file (25.08) was selected. Length was confirmed with a 10 K-file. The WaveOne Primary file was taken to length in all the canals. Obturation was done with WVC using Calamus Dual.

Case III (Figures 15a-c)

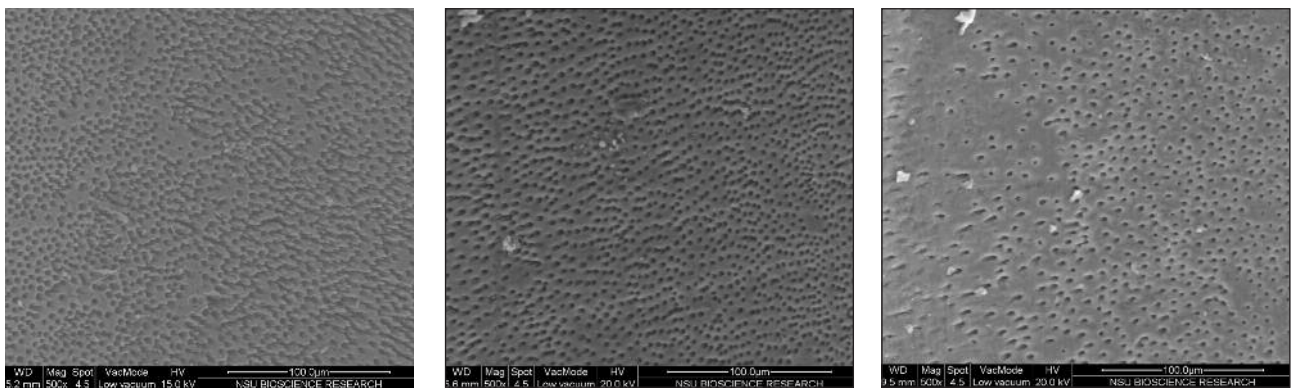
Tooth 17 presented with radiographic evidence of apical periodontitis and was non-vital. The canals were hardly visible on the preoperative X-ray. Primary consideration would have been a WaveOne Small file (21.06). In all canals, the 8 K-file moved to length easily. The 10 K-file also moved to length but was tight. A WaveOne Primary file (25.08) was selected and taken to approximately three-quarters of the length. Recapitulation was achieved with a 10 K-file to length. The WaveOne Primary file was taken to length in all the canals and the canals were then obturated with WVC.

Case IV (Figures 16a-c)

Tooth 16 presented with radiographic evidence of asymptomatic apical periodontitis. The canals were hardly



Figures 17a-c: Micro focus CT scan at coronal level (a), mid-root level (b) and apical level (c) of the mesial canals of the lower first molar demonstrates the excellent centring and shaping ability of WaveOne Primary file.



Figures 18a-c: A SEM representative sample at coronal level (a), mid-root level (b) and apical level (c) of the canal wall, showing excellent cleanliness and open dentinal tubules after shaping with a WaveOne Primary file and assisted irrigation with the EndoActivator.

visible on the preoperative X-ray. The MB canal was severely curved, and the distobuccal (DB) and palatal were not visible. A 10 K-file moved to length easily in the MB and DB canals. In the palatal canal, 10 and 15 K-files moved to length easily. A WaveOne Primary file (25.08) was selected for all canals. Lengths were confirmed and the canals were shaped to length with WaveOne files.

In tooth 15, a large, single canal was clearly visible. 20 and 25 K-files went to length and a WaveOne Large file (40:08) was selected. Canal length was confirmed and the WaveOne Large file was used to shape the canal.

Advantages of the WaveOne file reciprocating system

1. Only one NiTi instrument per root canal and in most cases per tooth
2. Lower cost
3. Less instrument separation due to the unique reciprocating movement that will prevent and/or delay the instrument advancing from plastic deformation to its plastic limit
4. Decreases global shaping time, allowing the clinician to spend more time cleaning the root canal system with

- enhanced irrigation techniques
5. Eliminates procedural errors by using a single instrument rather than using multiple files
6. A new standard of care, eliminating the possibility of prion contamination owing to single use
7. Easy to learn
8. Easy to teach.

WaveOne research

The Nova Southeastern University College of Dental Medicine in the USA is conducting research into WaveOne. The following areas of research, amongst others, are being investigated using micro-focus CT scanning technology, which provides remarkable insight into:

1. Canal centring ability of WaveOne (Kuttler et al, 2011) (Figures 17a-c)
2. Remaining canal wall thickness after instrumentation with WaveOne (Webber et al, 2011)
3. Final shape versus initial shape of the canal with WaveOne (Pertot et al, 2011)
4. Canal wall cleanliness with WaveOne (Machtou et al, 2011) (Figures 18a-c).

Other areas of research are flexibility (Mclean et al, 2011),

fatigue (Coil et al, 2011) and debris extrusion (Armando et al, 2011). To date, the results of these studies suggest that WaveOne single reciprocating files are comparable in performance to all the major leading brands of NiTi files that operate in continuous rotation.

Conclusion

The WaveOne system is an exciting new concept in the preparation of the root canal. Whilst current teaching advocates the use of multiples NiTi files of different diameter and taper to gradually enlarge the root canal, only one WaveOne single shaping file is required to prepare the canal to an adequate size and taper, even in narrow and curved canals.

However, along with this, there must be a caveat. WaveOne files only shape the canal, extremely quickly in many instances, but they do not clean the root canal. It is the duty of teachers, clinicians and manufacturers to emphasize the role and importance of irrigation as a major determinant of endodontic success. Once it is fully appreciated that shaping and cleaning the root canal system are irrevocably intertwined, then endodontics will be easier for all and available to all and WaveOne will truly become the root canal preparation instrument of the future.

Acknowledgement

This article originally appeared in roots_international magazine of endodontology Vol. 7, Issue 1/2011. It is published with permission by Oemus Media AG. © 2011 Oemus Media AG.

Drs Julian Webber, Pierre Machtou, Wilhem Pertot, Sergio Kuttler, Clifford Ruddle and John West where involved in the development, field testing and research associated with WaveOne.

References

Armando L, Kuttler S, Bonilla C, Webber J, Machtou P, Pertot W, Perez R, Hardigan P (2011) Comparison of the extruded debris of a new nickel titanium reciprocating file versus four conventional rotary systems. In press

Coil J, Shen Y, Kuttler S, Bonilla C, Ruddle C, West J, Rigoberto P, Hardigan P (2011) Incidence of instrument failure of a new nickel titanium reciprocating file system: a clinical evaluation in a postgraduate endodontic program and private practice. In press

Department of Health (UK) (April 2007) Advice for dentists on the re-use of endodontic instruments and variant Creutzfeldt-Jacob Disease (vCJD)

Johnson E, Lloyd A, Kuttler S, Namerow K (2008) Comparison between a novel nickel titanium alloy and 508

Nitinol on the cyclic fatigue life of Profile 25/04 rotary instruments. *J Endod* 34(11): 1406-1409

Letters S et al (2005) A study of visual and blood contamination on reprocessed endodontic files from general dental practice. *Brit Dent J* 199: 522-525

Kuttler S, Bonilla C, Perez R and Hardigan P (2011a) Evaluation of remaining canal wall thickness and center ability after instrumentation with a new reciprocating system. In press

Machtou P, Kuttler S, Bonilla C, Pertot W, Perez R, Hardigan P (2011) Evaluation of canal wall cleanliness after instrumentation with four nickel titanium rotary file systems and one reciprocating system. In press

Mclean R, Kuttler S et al (2011) Evaluation of the flexibility of four nickel titanium rotary file systems and one reciprocating file system. In press

Pertot W, Machtou M, Kuttler S, Bonilla C, Perez, R, Hardigan P (2011) Evaluation of remaining canal wall thickness and center ability after instrumentation with WaveOne reciprocating system vs Revo-S rotary NiTi system. In press

Pettiette MT, Delano EO, Trope M (2001) Evaluation of success rate of endodontic treatment performed by students with stainless steel K-files and nickel titanium hand files. *J Endod* 27(2): 124-7

Reddy SA, Hicks ML (1998) Apical extrusion of debris using two hand and two rotary instrumentation techniques. *J Endod* 24: 180-3

Roane JB, Sabala CL, Duncanson MG (1985) The 'balanced force' concept for instrumentation of curved canals. *J Endod* 11(5): 203-211

Ruddle CJ (2008) Endodontic disinfection: tsunami irrigation. *Endo Prac* 11: 7-16

Schilder H (1974) Cleaning and shaping the root canal. *Dent Clin Amer* 18(2): 269-296

Schneider K, Korkmaz Y, Addicks K, Lang H et al (2007) Prion Protein (PrP) in human teeth: an unprecedented pointer to PrP's function. *J Endod* 33(2): 110-113

Sjogren U, Figdor D, Persson S, Sundqvist G (1997) Influence of infection at the time of root filling on the outcome of endodontic treatment of teeth with apical periodontitis. *Int Endod J* 30(5): 297-306

Walia HM, Brantley WA, Gerstein H (1998) An initial investigation on the bending and torsional properties of Nitinol root canal files. *J Endod* 14(7): 340-351

Webber J, Kuttler S, Bonilla C, Perez, R, Hardigan P (2011b) Evaluation of remaining canal wall thickness and center ability after instrumentation with WaveOne reciprocating system vs rotary BioRace NiTi system. In press

West JD (2008) Endodontic predictability – restore or remove: how do I choose? In: Cohen M, Interdisciplinary treatment planning: Principles, design, implementation. Quintessence Publishing Co, 123-64